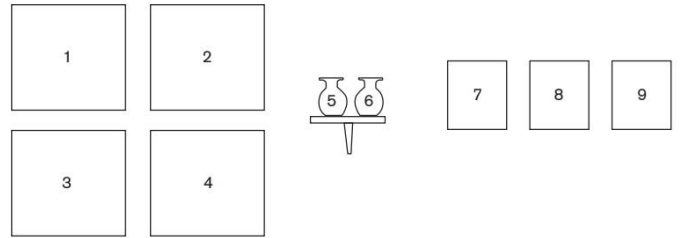


8 in 8: ReEnvisioning Print

May 19th to July 30th 2021

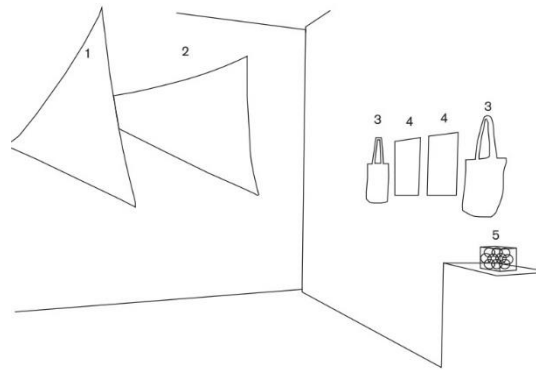
(Clockwise from door)

Michele Godwin



1. untitled	Textile print	16 x 16 in	2019
2. untitled	Textile print	16 x 16 in	2019
3. untitled	Textile print	16 x 16 in	2019
4. untitled	Textile print	16 x 16 in	2019
5. untitled	Ceramic vase	5.5x 5.75x5.75in	2019
6. untitled	Ceramic vase	5.5x 5.75x5.75in	2019
7. untitled	Etching	10 x 8 in	2020
8. untitled	Etching	10 x 8 in	2020
9. untitled	Etching	10 x 8 in	2020

Shervone Neckles

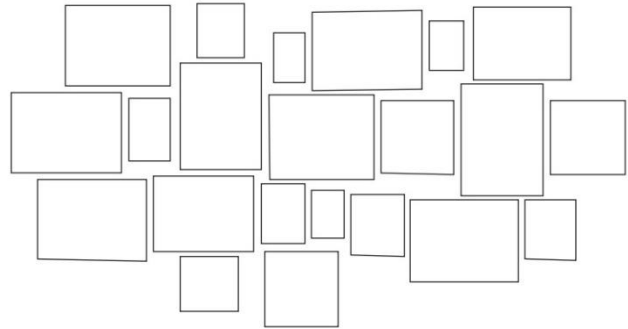


1. Beacon Sail	Screenprint on nylon ripstop	4 x 4 ft	2019
2. Beacon Sail	Screenprint on nylon ripstop	6 x 6 ft	2019
3. Tote bags	Screenprinted tote bags	Variable	2019
4. Information Boards	Digital print on board	12 x 18 in	2021
5. Paraphernalia Buttons	Metal buttons	1.25 in	2019

8 in 8: ReEnvisioning Print

May 19th to July 30th 2021

Nandini Chirimar



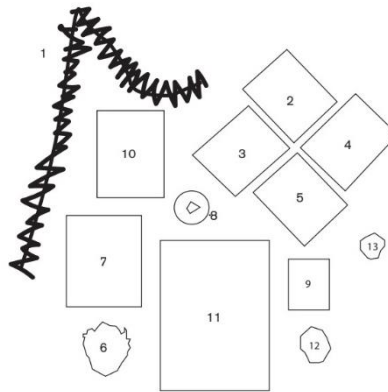
1. Marriage Manuscripts

Print installation (22 pieces)

Variable

N/A

Catherine Stack

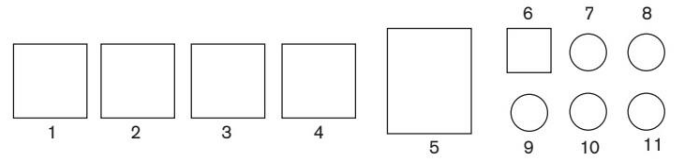


1. Garland	Sculptural etching	7 x 4.5 x 120 in	2015
2. Dove in the Window	Homemade inks & graphite	8 x 8 in	2021
3. Northstar	Homemade inks & graphite	8 x 8 in	2020
4. Nosegay	Homemade inks & graphite	8 x 8 in	2020
5. Crosses and Losses	Etching	10 x 8 in	2020
6. Spider	Gouache on Paper	11 x 14.75 x 7.5 in	2018
7. Catherine's Crux	Etching & thread	14 x 10.5 in	2013
8. Macrame Nest	Jute	13 x 9 in	2019
9. Kay's Crux	Etching on Kitakata	6 x 5 x .25 in	2013
10. Crime and Ornament	Etching & thread	10 x 14 in	2021
11. Knotted Nest	Etching	15 x 22 in	2019
12. Bivalve	Paper & graphite	14 x 6 x 7 in	2018
13. Embrace	Sculptural etching	5 x 3 x 7 in	2019

8 in 8: ReEnvisioning Print

May 19th to July 30th 2021

Rie Hasegawa

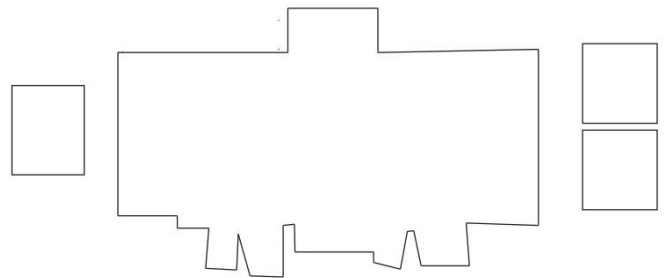
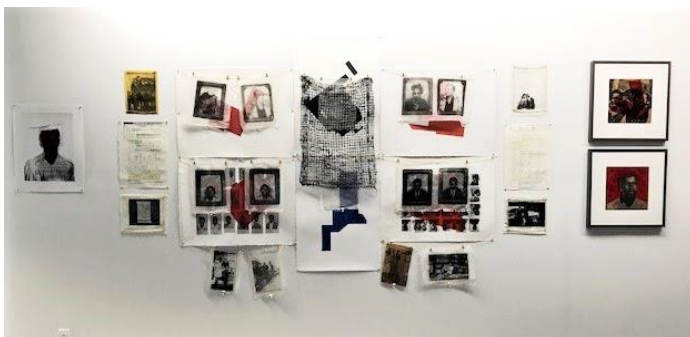


1. Ears to Come	Drypoint	10 x 11 in	2019
2. Ears to Come	Drypoint w/chine collé	10 x 11 in	2019
3. Vision Test	Drypoint	10 x 12 in	2019
4. Vision Test	Drypoint w/chine collé	10 x 12 in	2019
5. Break From Coffee Break #1	Mixed media	14 x 19 in	2019
6. Break From Coffee Break #2	Mixed media	9 x 9 in	2019
7. Break From Coffee Break #3	Mixed media	9 x 9 in	2019
8. Break From Coffee Break #4	Mixed media	9 x 9 in	2019
9. Break From Coffee Break #5	Mixed media	8 x 8 in	2019
10. Break From Coffee Break #6	Mixed media	8 x 8 in	2019
11. Break From Coffee Break #7	Mixed media	8 x 8 in	2019

CONFERENCE ROOM

(Counterclockwise from door)

Adreinne Waheed

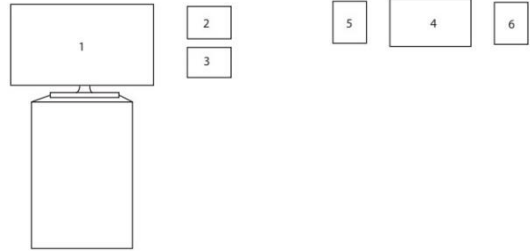
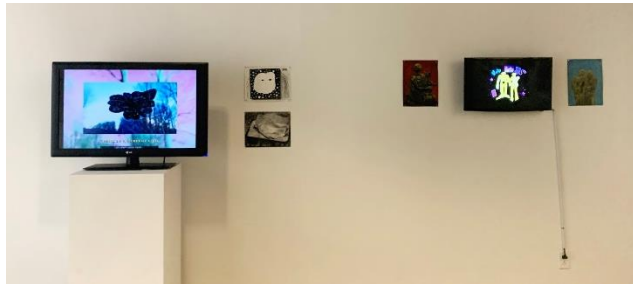


1. Redlines: Connecting the Dots	Multimedia installation	Variable	N/A
----------------------------------	-------------------------	----------	-----

8 in 8: ReEnvisioning Print

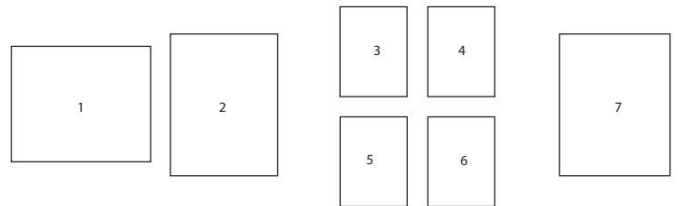
May 19th to July 30th 2021

Taehee Whang



1. Walking to my grandfather's mound	Single channel video	Variable	2019
2. My Mound	Charcoal on Stonehenge paper	9.25 x 12 in	2018
3. I feel your love after your departure	Charcoal on Stonehenge paper	9.25 x 12 in	2018
4. Diary Log 3.25.20	Single channel video	Variable	2020
5. Nail Clipper	Chalk pastel on Canson paper	9 x 12 in	2021
6. Incision	Chalk pastel on Canson paper	9 x 12 in	2021

Minna Resnick



1. Morning News	Mixed media w/printed elements	22 x 30 in	2017
2. Hide and Seek	Mixed media w/printed elements	22 x 30 in	2019
3. So What	Mixed media w/printed elements	20 x 16 in	2020
4. Stewardship	Mixed media w/printed elements	20 x 16 in	2020
5. Smoke Gets In Your Mouth	Mixed media w/printed elements	20 x 16 in	2020
6. What Was Left	Mixed media w/printed elements	20 x 16 in	2020
7. Civilization On Fire	Mixed media w/printed elements	22 x 30 in	2020

The Elizabeth Foundation for the Arts
 323 West 39th Street, New York, NY 10018
 P: (212) 563 5855
 E: info@efanyc.org